

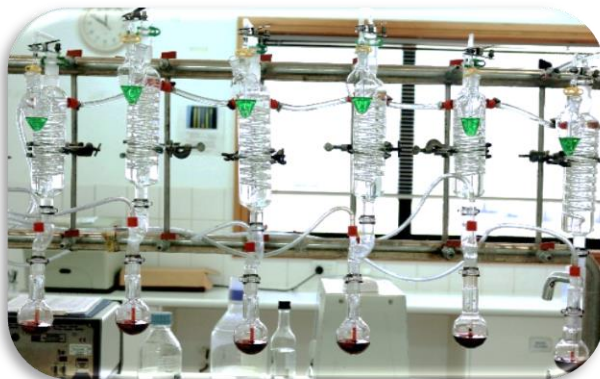
# COONAWARRA JACK LABORATORY

## EXTERNAL ANALYSIS



COONAWARRA JACK  
WINERY

TEST	METHOD	VOLUME REQUIRED	COST (ex. GST)	DAYS ANALYSIS CONDUCTED				
				Mon	Tue	Wed	Thu	Fri
Free & Total SO <sub>2</sub>	Aspiration	200ml	\$20		X	X		
pH / TA	Auto-titrator	100ml	\$20		X	X		
Specific Gravity	DMA/Hydrometer	200ml/500ml	\$18		X	X		
Alcohol	Alcolyser	100ml	\$22		X	X		
NTU	Turbi Meter	100ml	\$10		X	X		
Acetic	Enzymatic	50ml	\$20		X	X		
Glucose Fructose	Enzymatic	50ml	\$20		X	X		
L-Malic Acid	Enzymatic	50ml	\$20		X	X		
YAN	Enzymatic	100ml	\$30		X	X		
Heat Stability	6 hrs @ 80°C	100ml	\$20		X			
Cold Stability	72 hrs @ -4°C	300ml	\$20		X			
Bento Trail	Dose as per request	2L	\$70		X			
Grape Maturity (BE', pH/TA)*	Refractometer	300ml	\$30	X*	<i>N/A outside of vintage</i>			



External analysis is conducted on the days shown above, please contact CJW's lab to discuss any out of the ordinary requests (any urgent analysis on Monday's, Thursday's, and Friday's subject to availability, please ring to check).

Samples must be delivered to the front office by 11am, Heat stability by 9am.

**CJW-LAB-FRM-001 - External Wine Analysis Request Form** must accompany all samples.

\*All Grape Maturity samples require notification to CJW the business day prior, analysis on Monday only.

Payment via cash or eftpos on the day unless a credit account has been approved.

Your analysis bottles will be available for collection from the front office 1 week after analysis, however, should you need to collect your bottles earlier than this timeframe please advise when delivering samples.

15025 Riddoch Highway – PO Box 322 Coonawarra SA 5263

P: (08) 8736 3130

E: admin@coonawarrack.com

Document #:	CJW-LAB-DOC-003 - External Analysis Info Sheet - Rev 1.4				
Completed By:	S. Yang	Issue date:	26/05/2022	Revision Number:	1.4
Authorised By:	S. Yang	Document Status:	Released	Pages:	Page 1 of 1
Document location:	P:\06 Laboratory\00 Documents\CJW-LAB-DOC-003 - External Analysis Info Sheet - Rev 1.4.docx				