

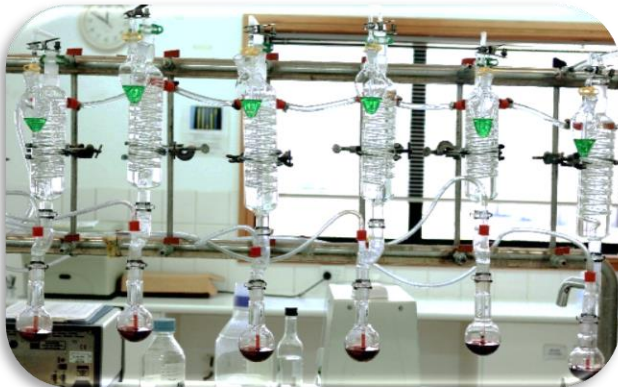
COONAWARRA JACK LABORATORY

EXTERNAL ANALYSIS



COONAWARRA JACK
WINERY

TEST	METHOD	VOLUME REQUIRED	COST (ex. GST)	During Vintage					Outside Vintage				
				Mon	Tue	Wed	Thu	Fri	Mon	Tue	Wed	Thu	Fri
Free & Total SO2	Aspiration	200 ml	\$20	X		X		X	X		X		X
pH / TA	Auto-titrator	100 ml	\$20	X		X		X	X		X		X
Alcohol	Alcolyser	100 ml	\$22	X		X		X	X		X		X
NTU	Turbi Meter	100 ml	\$10	X		X		X	X		X		X
Heat Stability	6 hrs @ 80°C	100 ml	\$20	X		X		X	X		X		X
Cold Stability	72 hrs @ -4°C	300 ml	\$20	X				X	X				X
Acetic	Enzymatic	50 ml	\$20	X		X		X	Sporadic – contact CJW lab to discuss				
Glucose Fructose	Enzymatic	50 ml	\$20	X		X		X					
L-Malic Acid	Enzymatic	50 ml	\$20	X		X		X					
YAN	Enzymatic	100ml	\$30	X		X		X					
Grape Maturity (BE', pH/TA)*	Refractometer	300ml	\$30	X*		X*		X*	N/A				



External analysis is conducted on the days shown above.
 Delivery of samples must be before 2pm to the main office.
CJW-LAB-FRM-001 - External Wine Analysis Request Form must accompany all samples.
 Please contact CJW's lab to discuss any out of the ordinary requests.
 *All Grape Maturity samples require notification to CJW the business day prior.
 Payment via cash or eftpos on the day unless a credit account has been approved.

Coonawarra Jack Winery Pty Ltd
 15025 Riddoch Highway – PO Box 322 Coonawarra SA 5263
 P: (08) 8736 3130 F: (08) 8736 3163
 E: admin@coonawarrack.com

Document #:	CJW-LAB-DOC-003 - External Analysis Info Sheet - Rev 1.1				
Completed By:	A. Laube	Issue date:	26/11/2019	Revision Number:	1.1
Authorised By:	A. Laube	Document Status:	Released	Pages:	Page 1 of 1
Document location:	P:\06 Laboratory\00 Documents\CJW-LAB-DOC-003 - External Analysis Info Sheet - Rev 1.1.docx				