

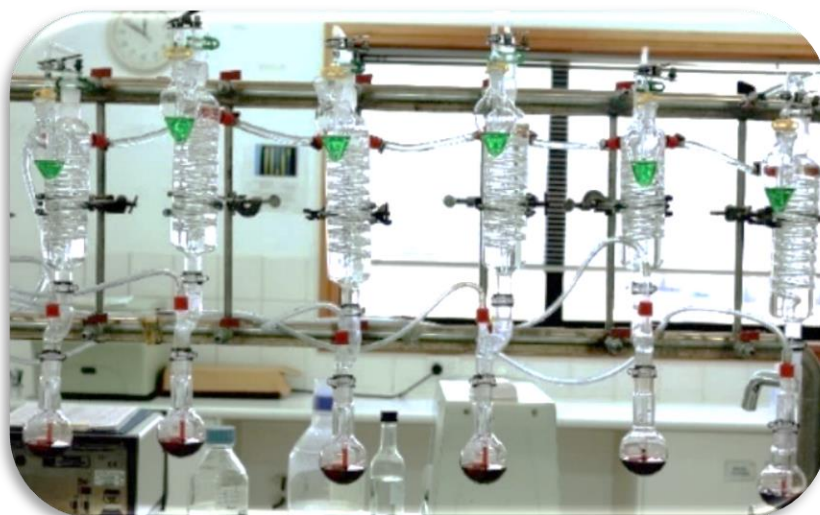
COONAWARRA JACK LABORATORY

EXTERNAL ANALYSIS



COONAWARRA JACK
WINERY

TEST	VOLUME REQUIRED (ml)	COST	
		Ex GST	Inc GST
Free & Total SO ₂	200	\$30.00	\$33.00
pH & TA	100	\$20.00	\$22.00
Specific Gravity	200/500	\$18.00	\$19.80
Alcohol	100	\$22.00	\$24.20
NTU (Turbidity)	100	\$10.00	\$11.00
Acetic acid	50	\$35.00	\$38.50
Glucose : Fructose	50	\$30.00	\$33.00
L-Malic Acid	50	\$30.00	\$33.00
YAN	100	\$35.00	\$38.50
Heat Stability	100	\$20.00	\$22.00
Cold Stability	300	\$20.00	\$22.00
Bentonite Trial	2,000	\$75.00	\$82.50
Grape Maturity (Baume, pH & TA)*	300	\$35.00	\$38.50
Filterability	750	\$35.00	\$38.50



CJW-LAB-FRM-001 - External Wine Analysis Request Form must accompany all samples.

Payment via cash or eftpos on the day unless a credit account has been approved.

Analysis is preferred to be conducted between Tuesday – Thursday.

However, can be done on other days if required– please call the laboratory to discuss and advise.

Samples to be delivered to the front office by 11am (9am for Heat stability, 1pm for grape maturity)

*All Grape Maturity samples require notification to CJW the business day prior, N/A outside of vintage.

Your analysis bottles will be available for collection from the front office 1 week after analysis, however, should you need to collect your bottles earlier than this timeframe please advise when delivering.

15025 Riddoch Highway, PO Box 322 Coonawarra SA 5263 | Phone: (08) 8736 3130 | Email: lab@coonawarrack.com

Document #:	CJW-LAB-DOC-003 - External Analysis Info Sheet - Rev 1.6		
Completed By:	K. Gartner	Issue date:	27/05/2024
Authorised By:	M. Ploenges	Document Status:	Released
Document	P:\06 Laboratory\00 Documents\CJW-LAB-DOC-003 - External Analysis Info Sheet - Rev 1.6.docx		Revision Number: 1.6
			Pages: Page 1 of 1